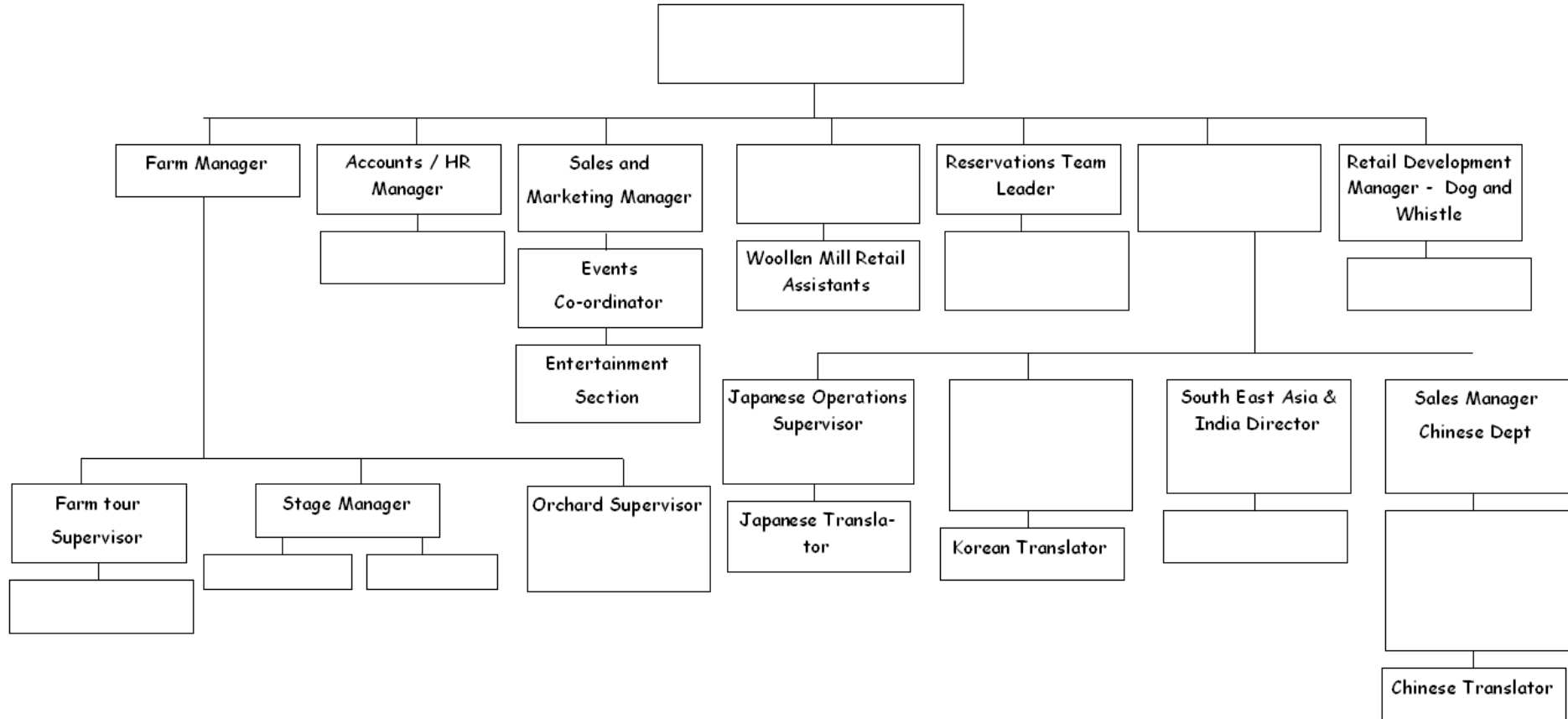


**24728 – Demonstrate knowledge of work roles in Tourism**

**Attractions and activities**

**sector: The Agrodome**

Agrodome Organisational Chart



Managing Directors  
Stage Presenter

Stage Assistant  
Accounts Administrator

Reception / Reservations Staff  
Southeast Asian Translators

Asian Operations Manager  
Retail assistant – Dog and Whistle

Chinese Operations Manager  
Farm Tour Driver

Woollen Mill Manager  
Korean Operations Manager

<b>Element 1</b> .	Identify four work roles from the list above.	<b>1</b>	<b>2</b>	<b>3</b>	<b>4</b>
<b>Element 2</b> Describe work roles in tourism.	2.1 For each role you have chosen describe the work role in terms of the average starting wage.				
	2.2 Describe the work role in terms of the associated tasks and duties. <i>This can be done by observation while at the Agrodome.</i>				
<b>Element 3 Choose ONE work role from the list above and</b> Describe skills, knowledge, personal attributes, and personal presentation requirements of work roles in tourism.					
<b>Work Role</b>	Skills	Knowledge	Personal attributes	Personal presentation requirements	